

2012 FTBA CONSTRUCTION CONFERENCE

Design Index Changes CPAM Changes

Dan Hurtado, Construction Structures Engineer

FLORIDA DEPARTMENT OF TRANSPORTATION
STATE CONSTRUCTION OFFICE

2012 FTBA CONSTRUCTION CONFERENCE

Design Index Changes

Design Index Changes

2010 Interim

- Previously
 - 21900, Fender System General Notes and Layout
 - 21910, Fender System – Heavy Duty
 - 21920, Fender System – Medium Duty
 - 21930, Fender System – Light Duty
- Now
 - 21900, Fender System – Polymeric Piles
 - 21930, Fender System – Prestressed Concrete Piles

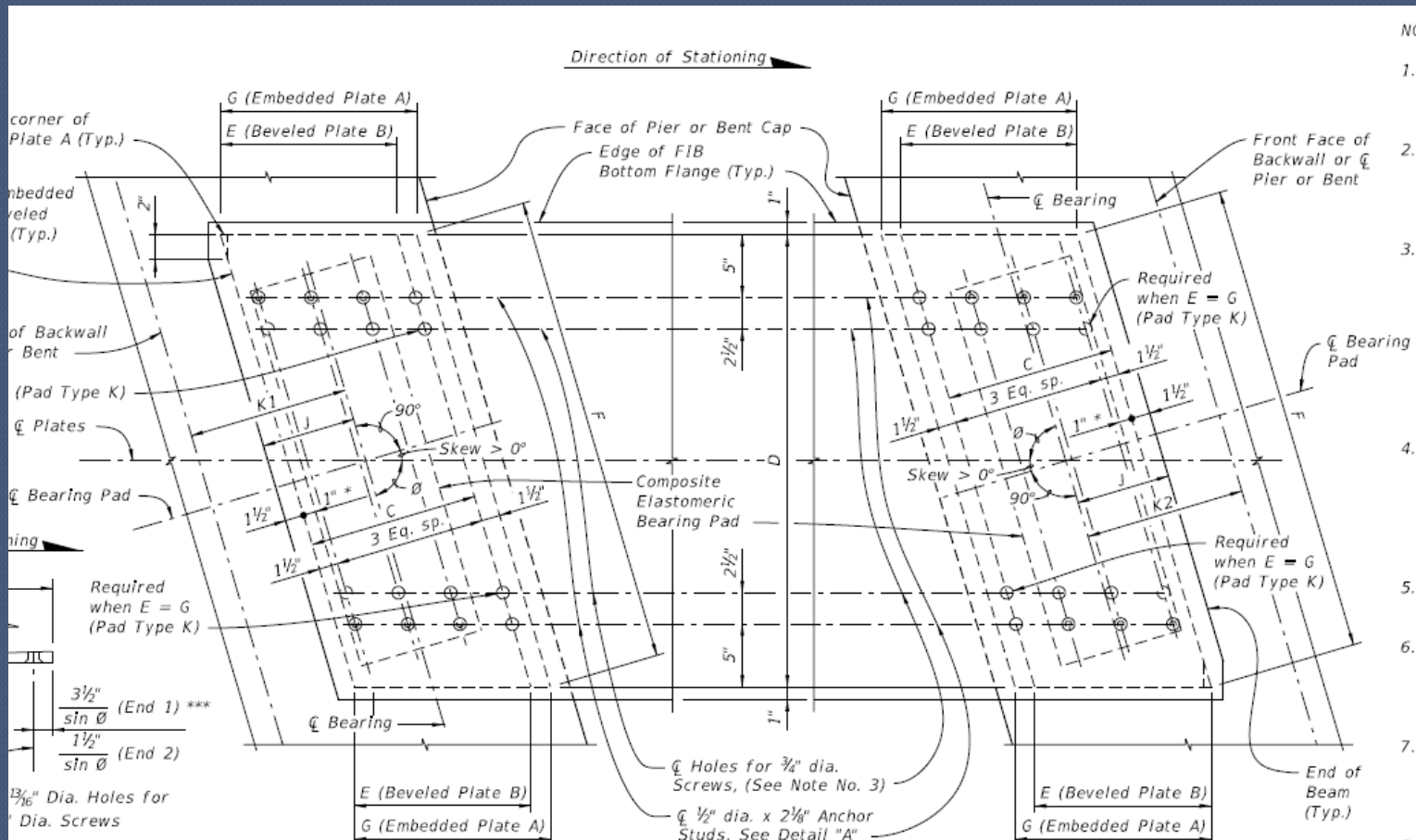
Design Index Changes

2012 Standards

- Changes to 20511 and 20512
 - Bearings under skewed girders

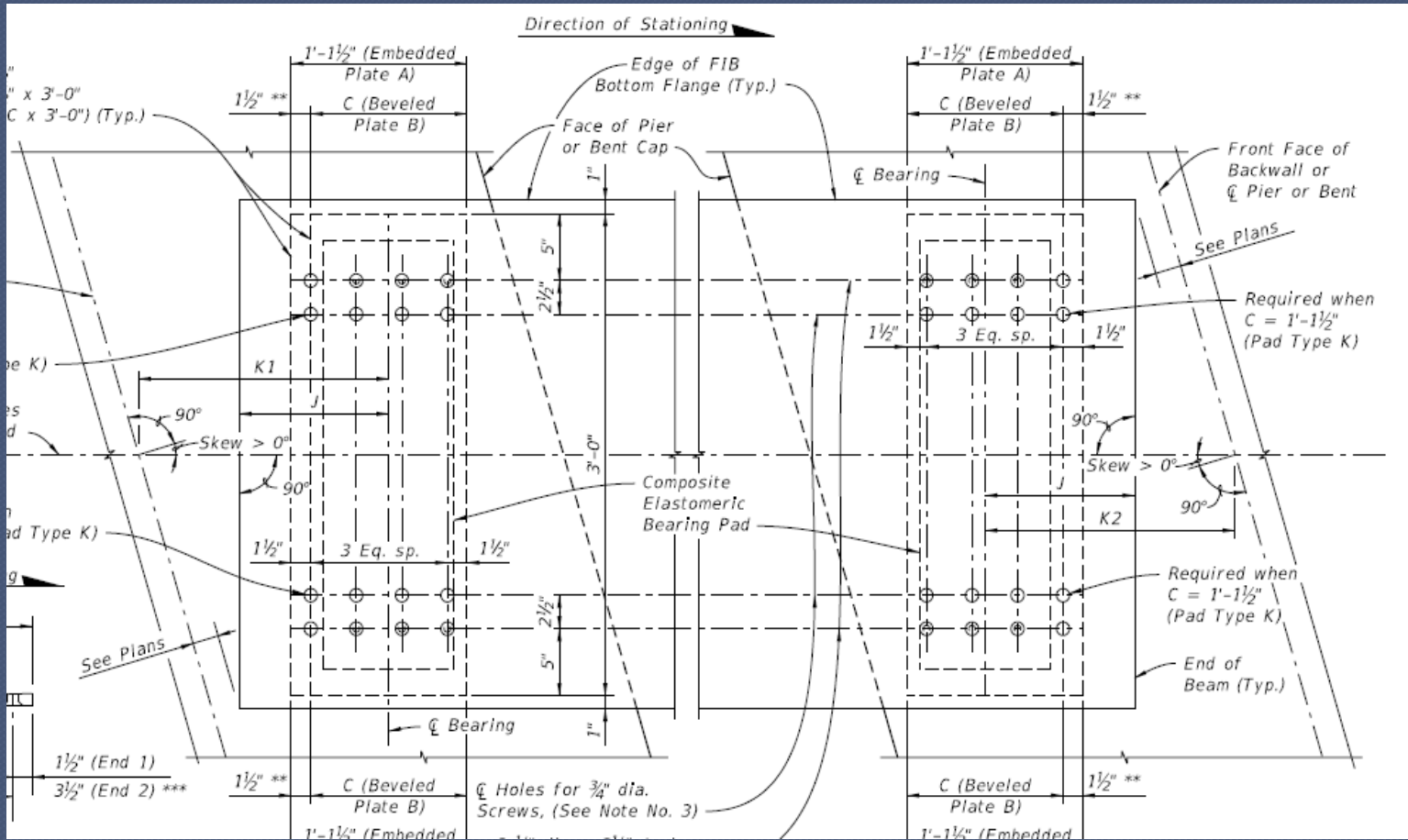
Design Index Changes

20511 – Bearing Aligned With Cap



Design Index Changes

20512 – Bearing Aligned With Girder



2012 FTBA CONSTRUCTION CONFERENCE

CPAM Changes

CPAM Changes

- ⦿ 8.11 - Contractor Initiated Submittals
- ⦿ 10.3 - Concrete Construction
- ⦿ 10.4 - Paint and Asbestos Removal, Handling and Disposal
- ⦿ 10.9 - Structural Steel and Miscellaneous Metal Components
- ⦿ 10.11 General Structures Construction Issues

CPAM Changes

- ⦿ 8.11 - Contractor Initiated Submittals
- ⦿ 10.3 - Concrete Construction
- ⦿ 10.4 - Paint and Asbestos Removal, Handling and Disposal
- ⦿ 10.9 - Structural Steel and Miscellaneous Metal Components
- ⦿ 10.11 General Structures Construction Issues

CPAM Changes

8.11 - Contractor Initiated Submittals

- Implemented 2 years ago
- Types
 - RFM – Request for Modification
 - Benefit to Contractor w/o diminishing performance or durability
 - RFI – Request for Information
 - Contract Document Interpretation
 - Contractor Identified Errors, Omissions or Conflicts
 - Pay Adjustment or Entitlement
 - RFC – Request for Correction
- 17 Item Tracking Log

CPAM Changes

- ⦿ 8.11 - Contractor Initiated Submittals
- ⦿ 10.3 - Concrete Construction
- ⦿ 10.4 - Paint and Asbestos Removal, Handling and Disposal
- ⦿ 10.9 - Structural Steel and Miscellaneous Metal Components
- ⦿ 10.11 General Structures Construction Issues

CPAM Changes

10.3 - Concrete Construction

- 10.3.4 – Mass Concrete
 - Oversee Contractor's monitoring of temp. differential
 - Max core temp should not exceed 180deg F
 - Added requirement for CEI to transmit Contractor's temp. monitoring data to District Materials Office (DMO)
 - Should be sent to DMO as soon possible upon receipt from Contractor

CPAM Changes

10.3 - Concrete Construction

- 10.3.5 – Crack Inspection
 - Clarifies when inspection is required for components hidden from view
 - Crack maps must be entered into CDMS with precision
 - Now addresses cracks in buried culverts
 - Contractor's EOR (not a Specialty Engineer) must perform evaluation of structural cracks

CPAM Changes

10.3 - Concrete Construction

- 10.3.6 – Various Concrete issues
 - Reduced concrete test frequency requests from Contractor
 - DMO notification of concrete placements
 - Contractor's QC Technician or CEI to verify consistency of all concrete trucks (not just those to be tested)
 - Notification of DMO regarding concrete lumps and balls

CPAM Changes

- ⦿ 8.11 - Contractor Initiated Submittals
- ⦿ 10.3 - Concrete Construction
- ⦿ 10.4 - Paint and Asbestos Removal, Handling and Disposal
- ⦿ 10.9 - Structural Steel and Miscellaneous Metal Components
- ⦿ 10.11 General Structures Construction Issues

CPAM Changes

10.4 - Paint and Asbestos Removal, Handling and Disposal

CEI responsibility for verifying Contractor's use of respirators to be removed. (OSHA requirement)

CPAM Changes

10.9 - Structural Steel and Miscellaneous Metal Components

- Shear connectors to be installed in field only
- CEI must monitor and record Contractor's bend tests
- CEI must monitor and record
 - Rotational Capacity Tests
 - Daily Snug Tight Torque Tests
 - Turn of Nut Bolt Tightening Procedures
- Test results must be kept on file in CEI Office

CPAM Changes

- ⦿ 8.11 - Contractor Initiated Submittals
- ⦿ 10.3 - Concrete Construction
- ⦿ 10.4 - Paint and Asbestos Removal, Handling and Disposal
- ⦿ 10.9 - Structural Steel and Miscellaneous Metal Components
- ⦿ 10.11 General Structures Construction Issues

CPAM Changes

10.11 – General Structures Construction Issues

- Contractor's Engineer of Record
 - Prequalified firm
 - May repair or detail permanent work
 - May perform VECP designs
- Prequalified Specialty Engineer
 - Prequalified Individual
 - Major or structural work must be checked by another PQSE
- Specialty Engineer
 - Minor, temporary or non-structural work (shoring, bearings, etc.)